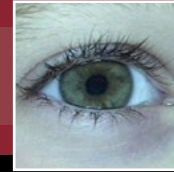


Ophthalmoscope

AMD-2070



A Lot Is Seen in the Eyes

The *Ophthalmoscope* is the perfect tool to closely examine a patient's inner eye in order to determine the health of the retina and help detect other medical issues that can be "seen" in the eye. This PanOptic™ Ophthalmoscope provides unsurpassed optic quality of the ocular fundus and five times larger field-of-view than ever before achieved with standard ophthalmoscopes. What makes this ophthalmoscope unique for telemedicine applications, is the attached digital camera that provides clinicians the ability to easily share retinal images with a remote specialist.



Unsurpassed Optic Quality of the Optic Fundus

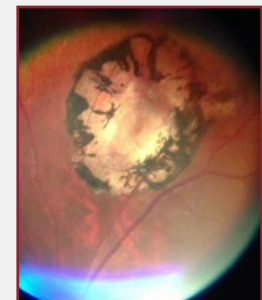
5x Larger
Field-of-View



PanOptic™



Standard Scope



Toxoplasmosis Scar



Papilledema

Product Features:

- Axial PointSource™ Optics make it easy to enter small, undilated pupils and provide a 25° field-of-view versus the standard 5° field-of-view.
- Magnification is 26% higher than standard scopes, making it even easier to see clear retinal details.
- Patient Eyecup helps with orientation and provides a pivoting point for leverage in panning around the retina and occluding ambient light.
- Dynamic Focusing Wheel allows you to adjust the focus in a continuous smooth action for more precise control and optimum view.
- Attached digital camera makes it seamless to share retinal images with a remote specialist.
- Integration with AMD's AGNES™ software allows you to share medical images as they are captured, with the consulting physician.

Technical Specifications:

Dimensions: (with eyecup) 6.57" (l) x 1.40" (w) x 3.75" (h)

Weight: .50 lbs

Focusing Range: -20 to +20 diopters

Field of View: 25° field-of-view

Aperture Settings:

- 3 spot sizes: micro, small and large
- Slit aperture
- Red-free filter

Light Source: Halogen HPX™ lamp

Power Source: 3.5V lithium ion smart rechargeable battery

Connection: USB interface

Digital Camera Attachment:

- Carl Zeiss optics
- 2 megapixels HD quality

Operating Temperature:

- Temperature: 50° F - 120° F (-10° C - 49° C)
- Relative air humidity: 95% max
- Altitude: 500hPa - 1060 hPa

Storing/Transport Temperature:

- Temperature: 68° F - 120° F (-20° C - 49° C)
- Relative air humidity: 95% max
- Altitude: 500 hPa - 1060 hPa

Equipped with USB Adapter & Eyecup Piece



AMD Global Telemedicine
321 Billerica Road
Chelmsford, MA 01824

Toll-Free: 1-866-449-8210
info@amdtelemedicine.com
www.amdtelemedicine.com